





Beavand, Oregon



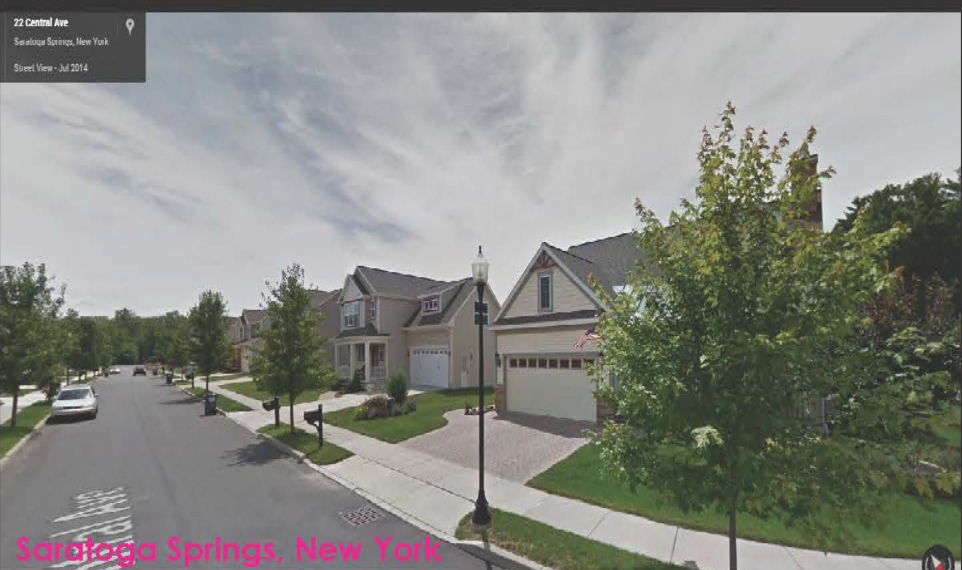
Bozeman, Montana



Jamestown, North Dakota



St. Louis, Missouri



Madison Springs, New York



Waterville, Maine



Beverly Hills, California



Twin Falls, Idaho



Wichita, Kansas



Chicago, Illinois



Levittown, Pennsylvania



Springtown, Maryland





Portland, Oregon



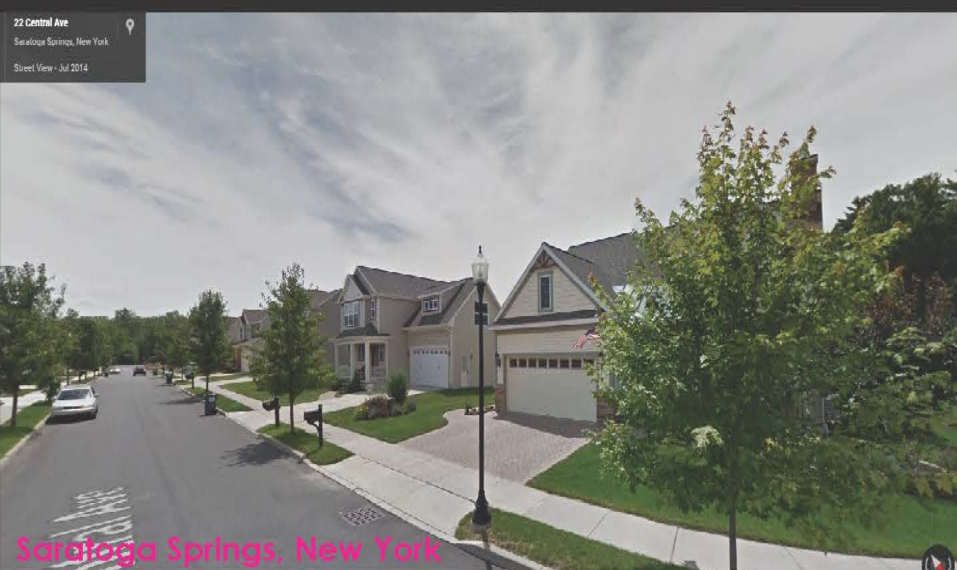
Bozeman, Montana



Jamestown, North Dakota



St. Louis, Missouri



Madison Springs, New York



Waterville, Maine



Beverly Hills, California



Twin Falls, Idaho



Wichita, Kansas



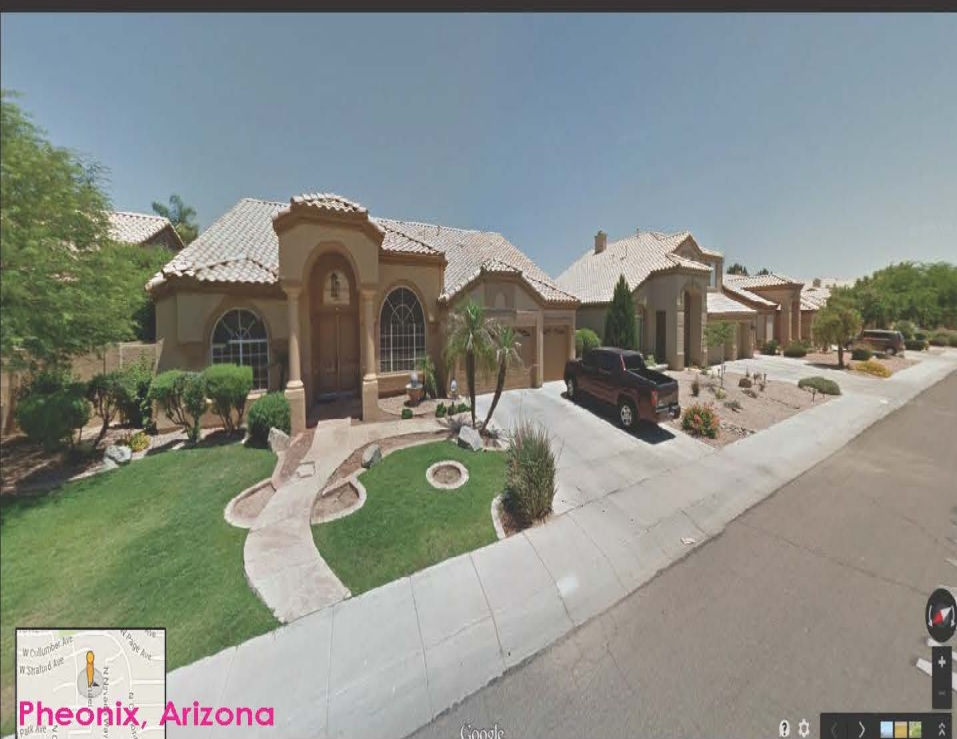
Chicago, Illinois



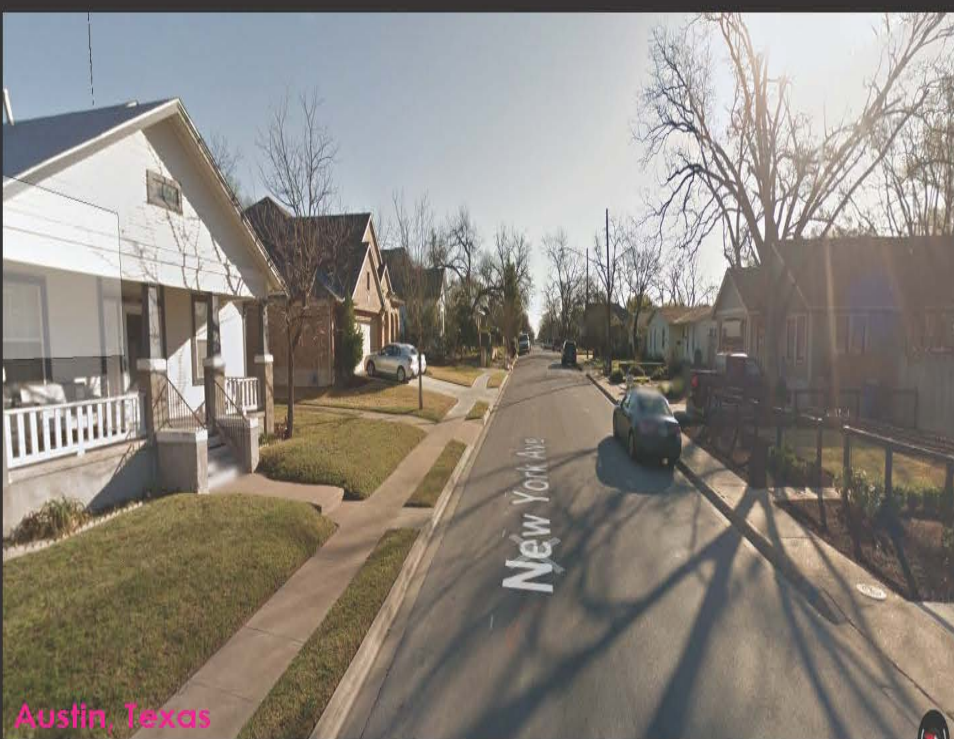
Levittown, Pennsylvania



Foxgiantown, Maryland



Phoenix, Arizona



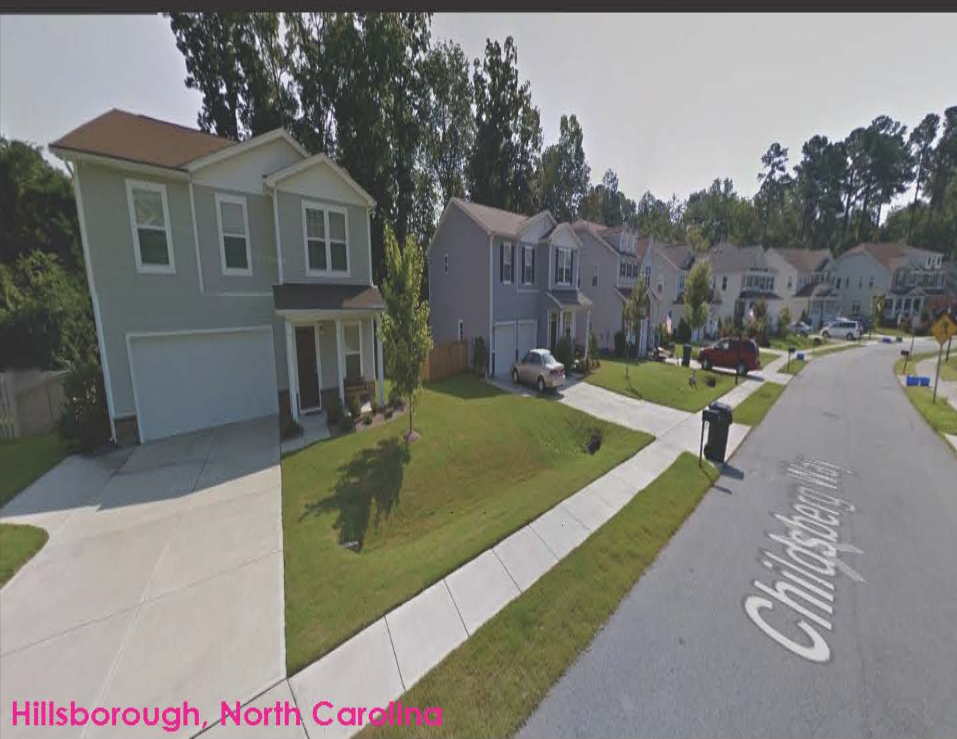
Austin, Texas



Alexandria, Louisiana



Atlanta, Georgia



Hillsborough, North Carolina



St. Augustine, Florida





Portland, Oregon



Rosamond, Montana



Jamesburg, North Dakota



St. Louis, Missouri



Saratoga Springs, New York



Scarborough, Maine



Beverly Hills, California



Twin Falls, Idaho



Wichita, Kansas



Chicago, Illinois



Lehigh Valley, Pennsylvania



Annapolis, Maryland



Phoenix, Arizona



Austin, Texas



Alexandria, Louisiana



San Antonio, Texas

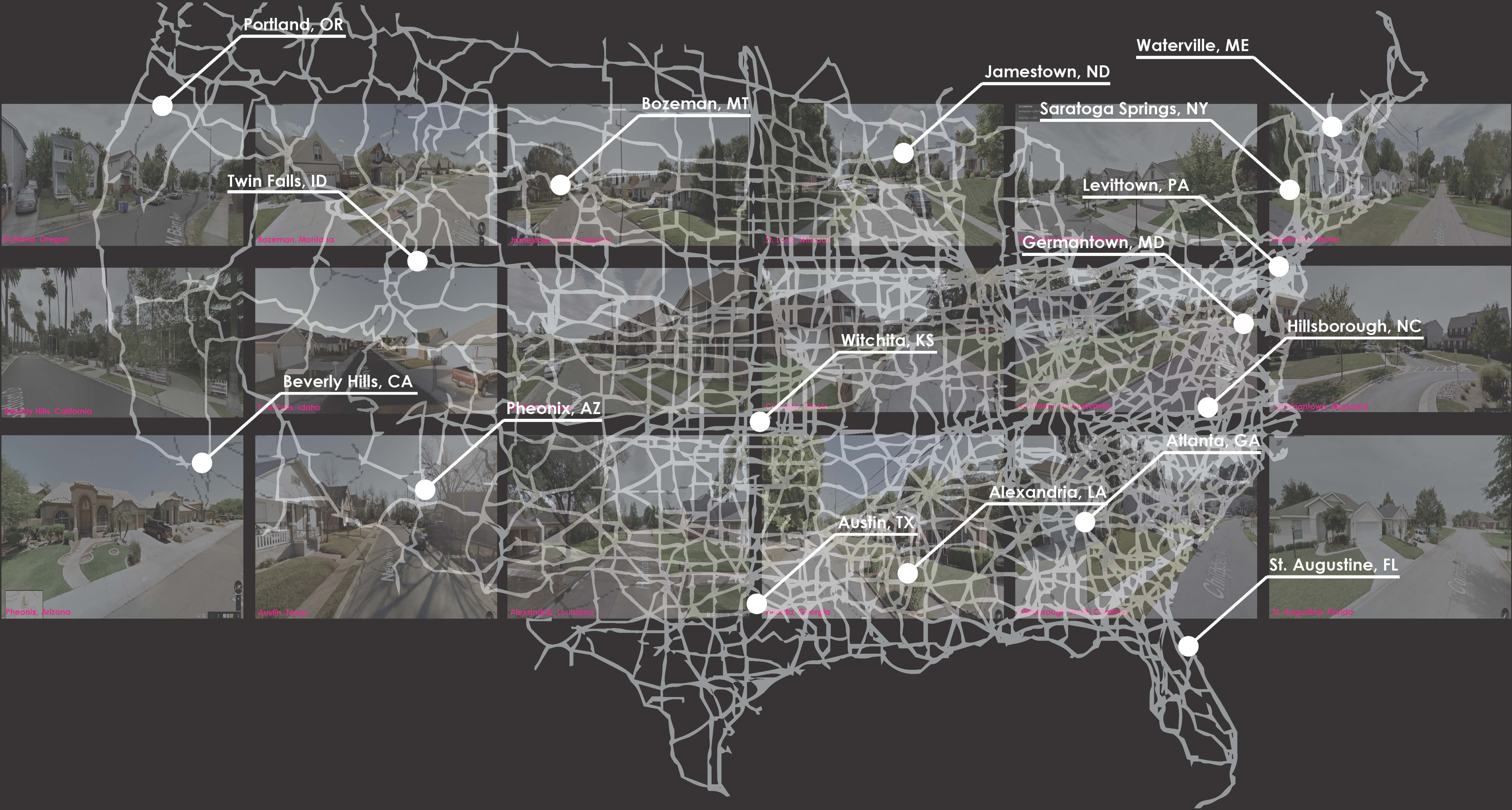


Houston, Texas



St. Augustine, Florida

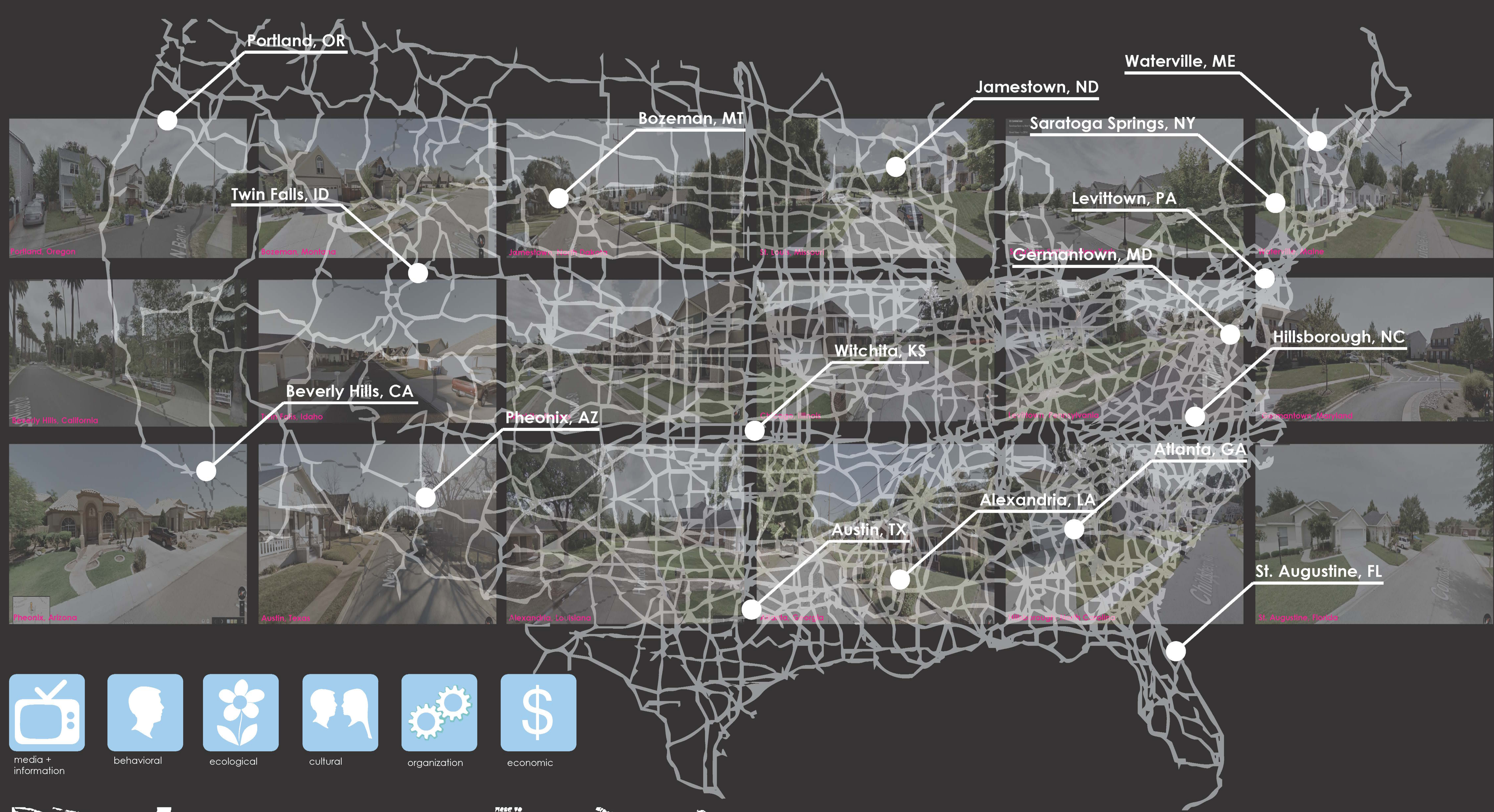






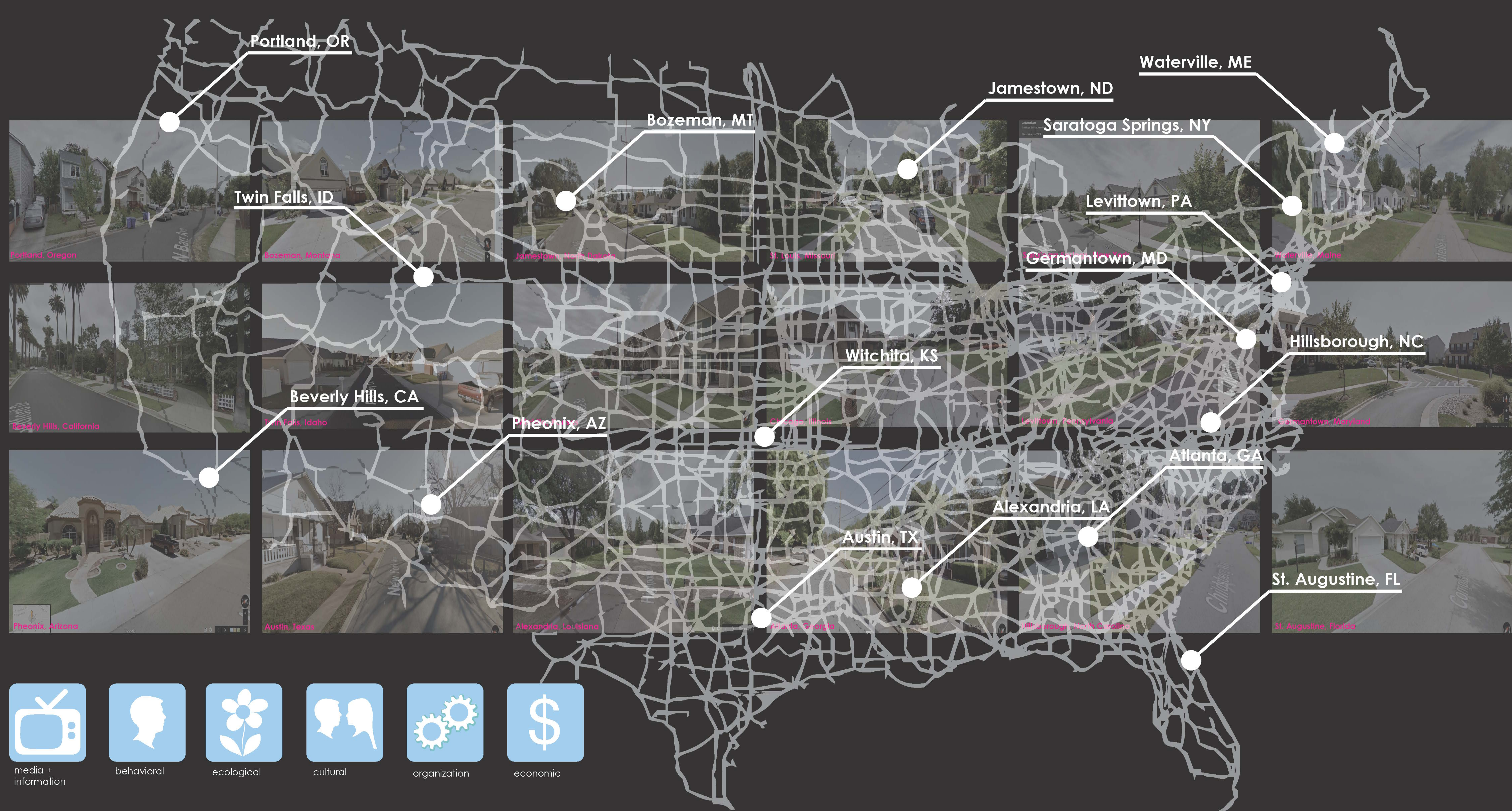




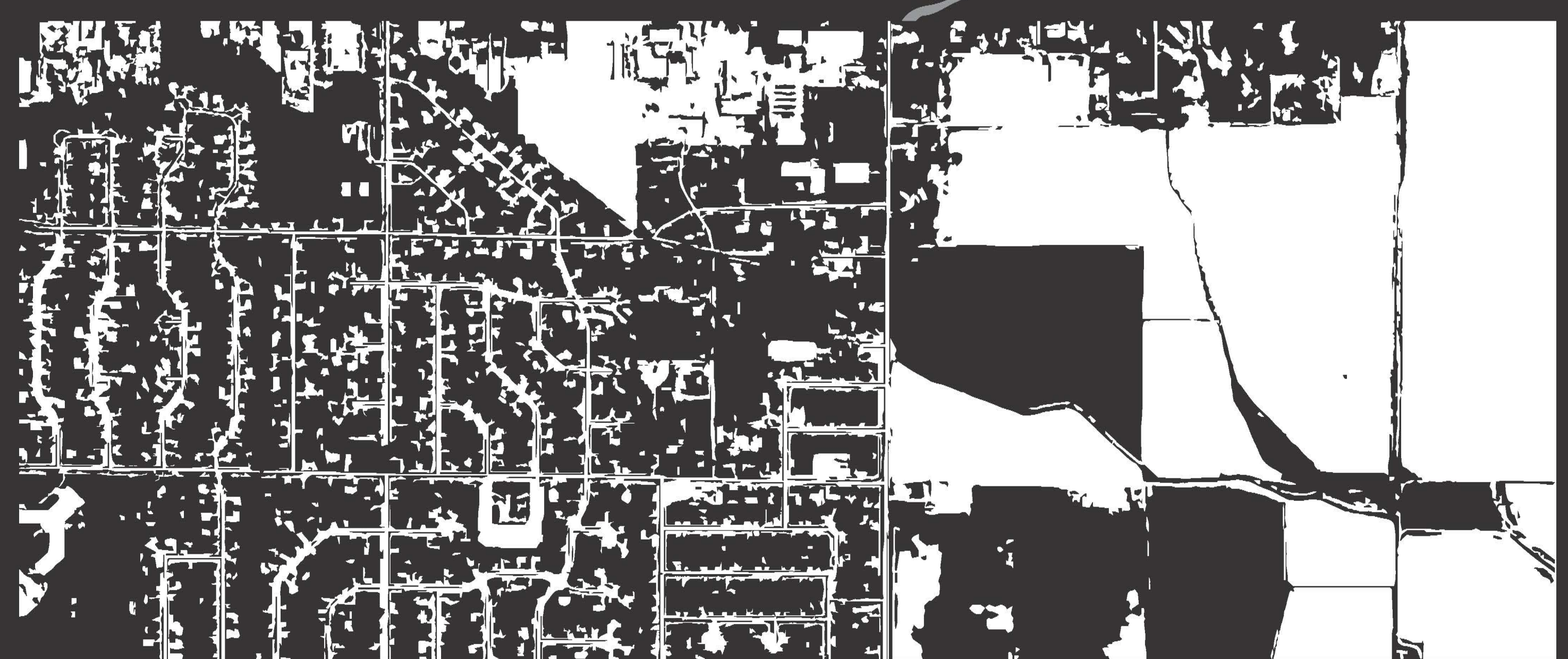


Suburban Sprawl + The American Dream



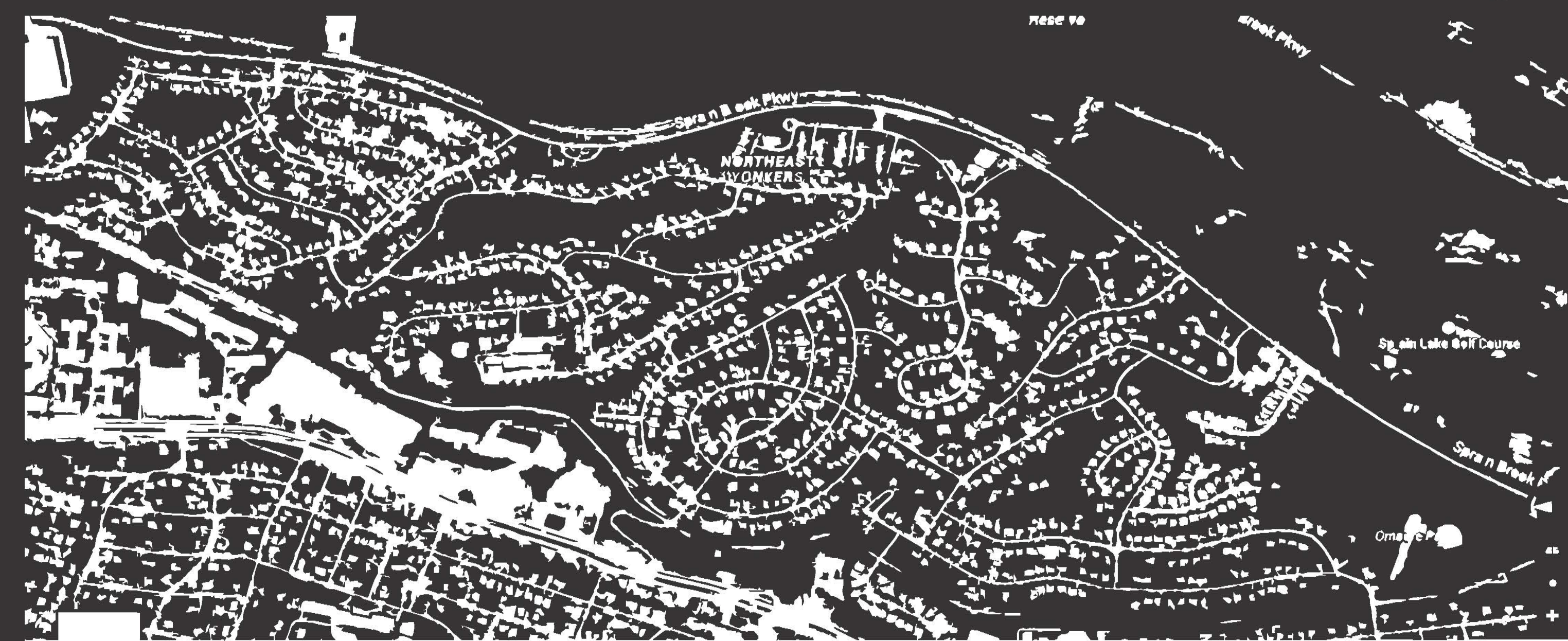
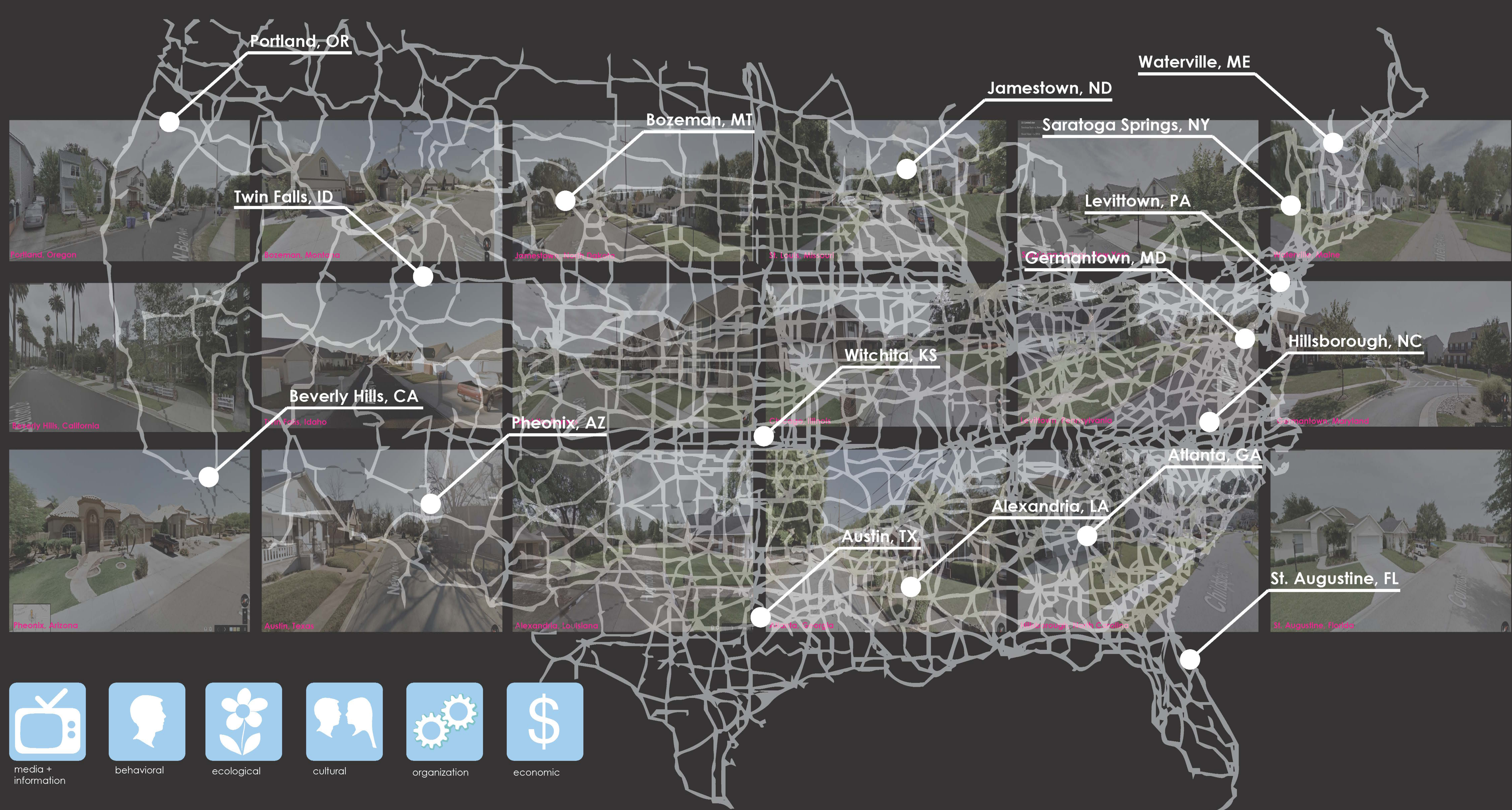


Suburban Sprawl + The American Dream



Sup-urban Sprawl + The American Ultimatum





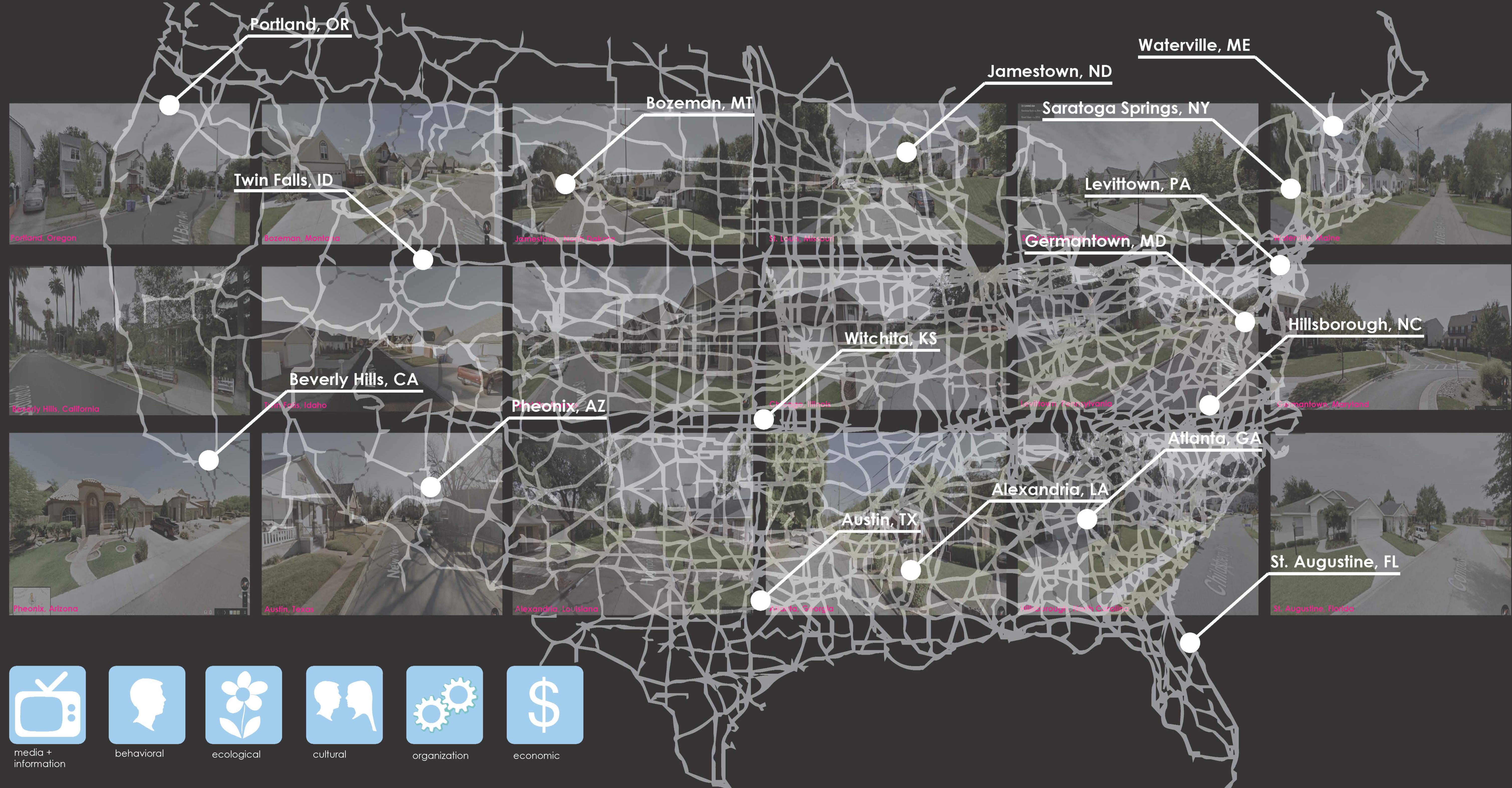
Suburban Sprawl + The American Dream



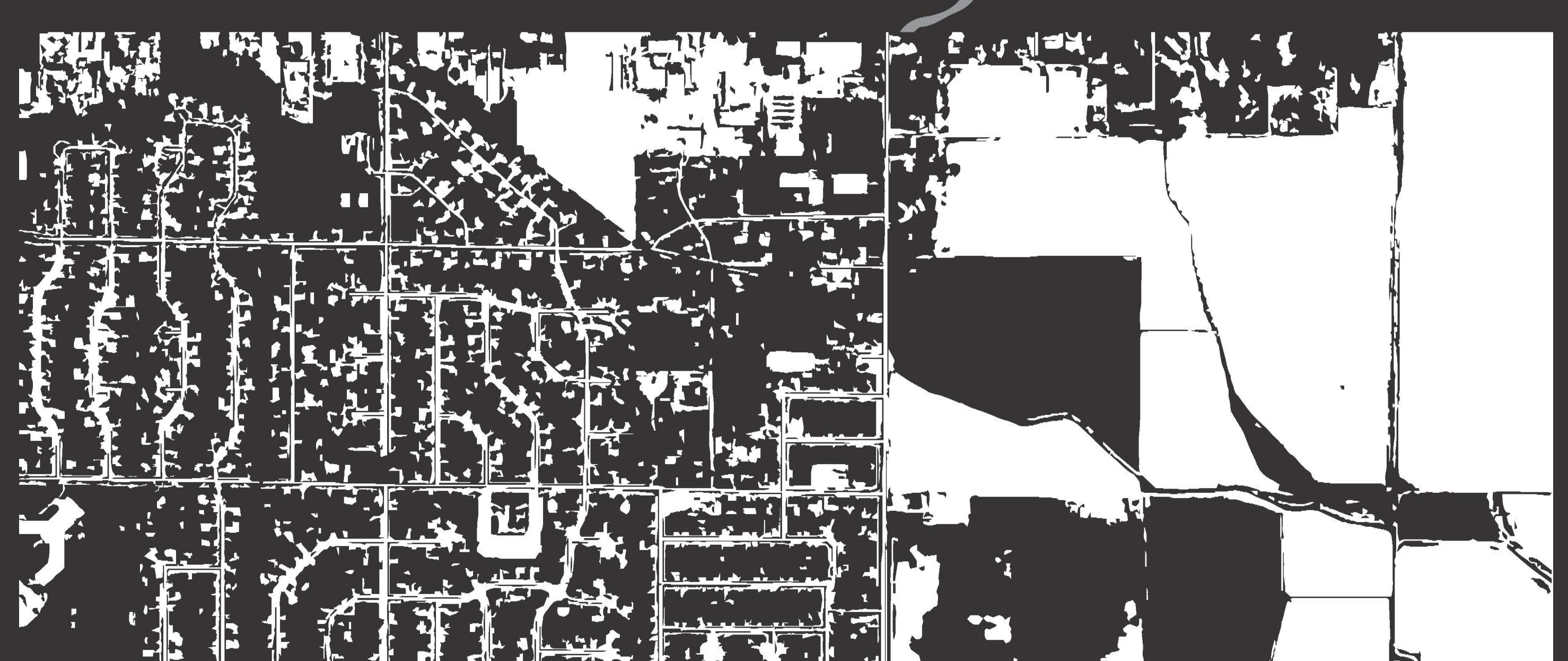
Sup-urban Sprawl + The American Ultimatum







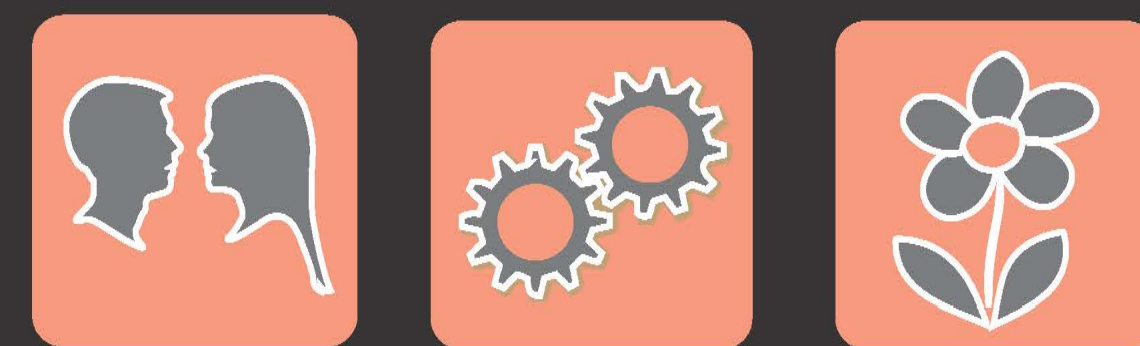
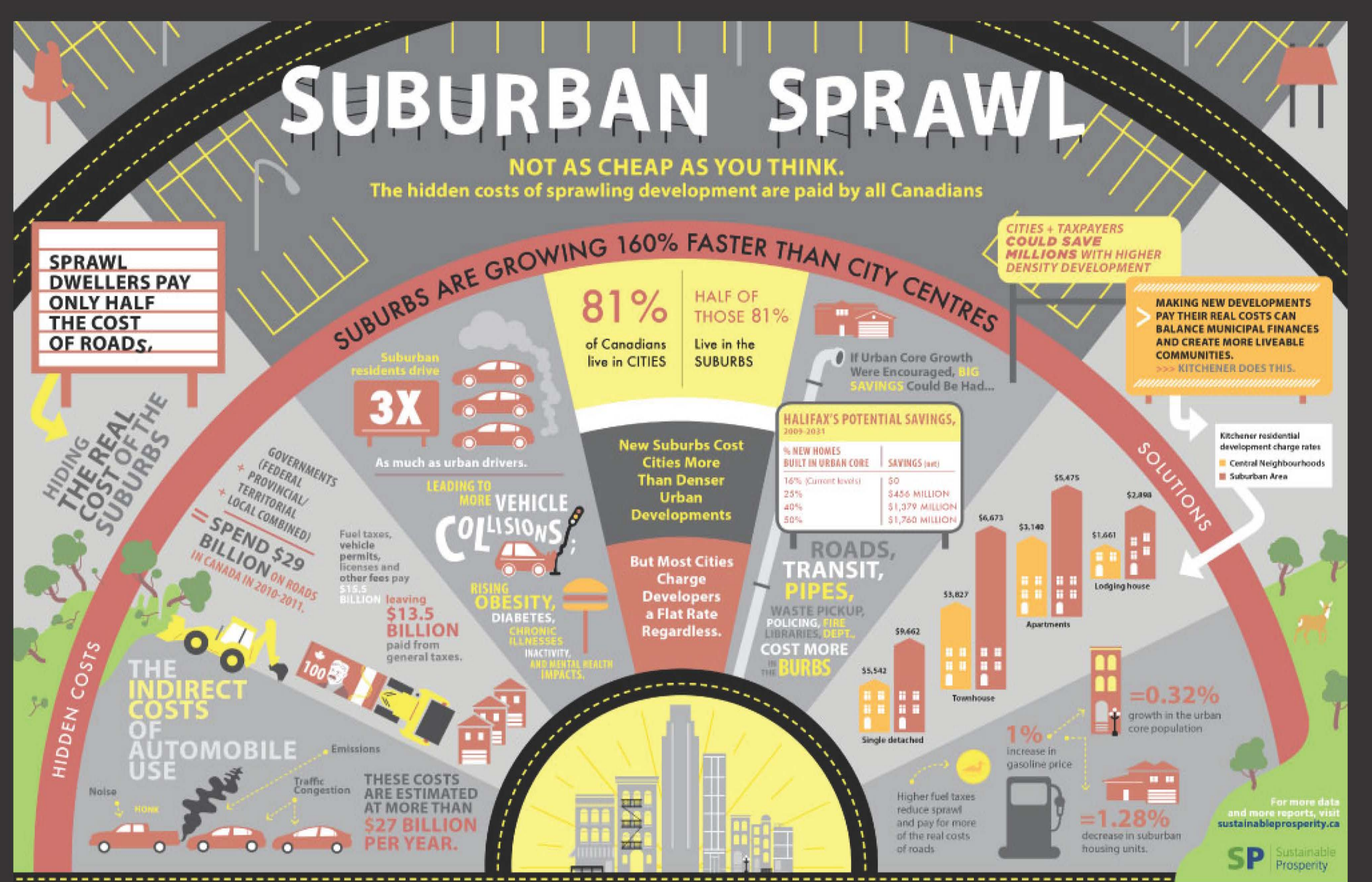
Suburban Sprawl + The American Dream



Sup-urban Sprawl + The American Ultimatum



Media re-iterates the ideal of the common place "American Dream." Advertisements, graphics, and broadcasts have become a modern-day capitalist psychology that plays on human behavior to reinforce the wants that have become the manufactured needs that maintain spending and sustain the capitalist system by playing on basic human desires and emotions, creating a self-perpetuating, sustainable, system.



The graphics shown above and left show the ideological change that is possible when culture becomes unsustainable; as it is now. Today's American Dream cannot be sustained. The organizational strategy behind suburbia + sprawl becomes anti-logical in both numbers + ecology. To allot the "suburban" amount of space to for each citizen is requires more area than is possible. Ecologically, we have orchestrated a world that requires excessive amounts of energy in order to connect to one another + acquire resources to survive. We have created an unsustainable, anti-logical anthropocentric ecology.